

Provision and Management of Recreation Facilities and Infrastructure 2024

Report to the Department of Rural and Community Development



Contents

Introduction	4
About Coillte	5
Annual DRCD – Coillte Recreation Maintenance Programme – 2022-2026	6
Visitor Trends 2019 to 2024	7
Ireland's Trail Network	9
Walks Scheme	10
Funding Evaluation	11
DRCD-Coillte 2024 Programme Project Examples	12
All Access Toilets	
Rossmore Forest Park, Co. Monaghan	13
Trail Development Works	
Donadea Forest Park, Co. Kildare	14
Kilrush Forest Recreation Area, Co. Clare	15
Woodstock, Co. Kilkenny	16
Lough Key Forest Park Garden Walk Renewal, Co. Roscommon	18
Tintern Abbey, Co. Wexford	20
Glenbarrow Path Improvement Works, Co. Laois	22
Other Maintenance Improvement Works	
Avondale Pond Works, Co. Laois	24
Mullaghreelan Trail, Co. Kildare	25
Community Recreation and Project Development Support	26
Kilmagig Forest, Co. Wicklow – Natural Woodland Play Area	27
Island Wood ORIS Project, Co. Cork	29
Dartrey ORIS Project, Co. Monaghan	30
Millennium Wood Oris Project, Co. Kilkenny	31
Jeninstown Oris Project, Co. Kilkenny	32
Red Earls Pass Oris Project, Co. Sligo	33
Ballygallway Trail Oris Project, Co. Sligo	34
Appendix 1 - Sites maintained with DRCD funding contribution in 2024	35

Coillte's purpose is to manage the state forests on behalf of the people of Ireland. Coillte's mission is to deliver the multiple benefits of its forests for climate, nature, wood and people. It's vision is to create a sustainable future for all from its forests.



Introduction

Coillte, Ireland's semi-state forestry company, is responsible for managing circa 440,000 hectares of primarily forested lands. Coillte balances and delivers the multiple benefits of forestry for climate, nature, wood and people. Coillte is the largest provider of outdoor recreation in Ireland with 260 forest recreational areas, twelve forest parks and six mountain bike centres nationwide.

From its forest parks to the smallest neighbourhood forest, the Coillte estate sees an estimated 18m individual visits annually from local and overseas recreation visitors.

Coillte's strategic vision for the future of its forest estate aims to deliver multiple benefits from its forests and bring more focus to climate action, biodiversity and recreation, while continuing to deliver for the forest and wood products industry. The number of annual visits to Coillte's forests underlines the important role forests play in supporting people's mental and physical wellbeing and supports Coillte's ambitions under the Forests for People pillar of its strategy.

Forests for climate

Enable the creation of 100,000 hectares of new forests, half of which will be native woodlands, which will sink 18m tonnes CO₂ by 2050



Manage the existing forest estate to increase the carbon store by 10m tonnes of CO₂ by 2050

Redesign 30,000 hectares of peatland forests for climate and ecological benefits by 2050



Generate an additional 1 gigawatt of renewable wind energy to power 500,000 homes by 2030

Forests for wood

Produce 25m cubic metres of certified Irish timber, to support the construction of 300,000 homes by 2030



Promote the use and benefits of wood products to increase the level of timber homes from 20% to 80% by 2050

Forests for nature

Enhance and restore biodiversity by increasing the area of our estate managed primarily for nature from 20% to 30% by 2025



Transform areas of our forests so that 50% of our estate is managed primarily for Nature in the long-term

Forests for people

Enable the investment of €100 million in world-class visitor destinations to support growth in tourism and recreation by 2030



Double the number of recreation areas to 500, to benefit local communities and people's wellbeing

Create 1,200 new jobs in rural communities to support the just transition to a low carbon economy



About Coillte

Coillte is the nation's largest forester and producer of certified wood, a natural, renewable and sustainable resource. It is also the largest provider of outdoor recreation spaces in Ireland, it facilitates renewable energy generation on the estate and manufactures panel board wood products. Coillte also enhances and restores biodiversity and delivers nature rehabilitation projects of scale.

Coillte employs over 800 people directly, and circa 1,200 contractors, working across three divisions; Coillte Forest, Land Solutions and MEDITE SMARTPLY, and is part of a wider sector which supports circa €2.3 billion of economic activity annually. When Coillte was established as a commercial semi-state company in 1989, it became the manager of a diverse forest estate of 396,000 hectares.

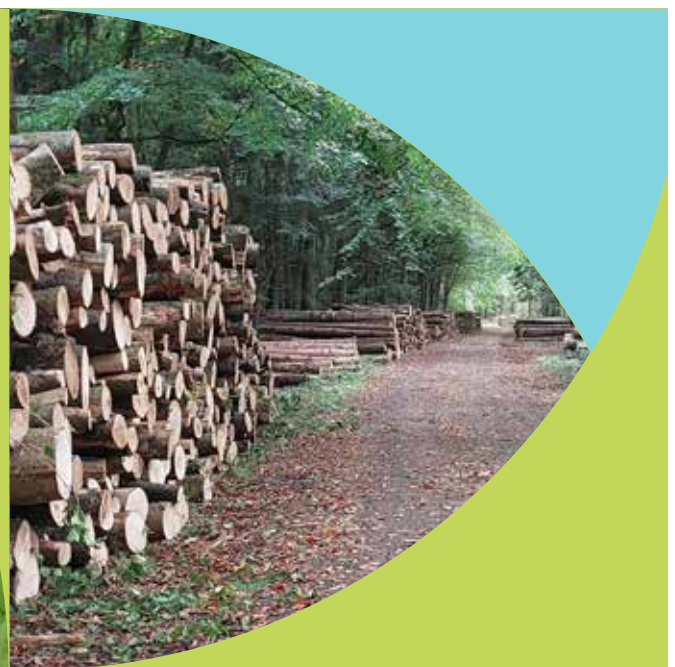
Over the last 35 years, the organisation has developed the forests and land and grown the area under management to circa 440,000 hectares. The Coillte Forest division manages all aspects of the forest cycle, from collecting seed to planting trees, tending forests and sustainably harvesting trees, before replanting to start the cycle again. It is also responsible for protecting nature and biodiversity by restoring and enhancing habitats across the estate.

Coillte is the leading supplier of roundwood to the vibrant Irish wood processing sector. Circa 3 million m³ of roundwood is produced by Coillte's harvesting operations each year, the majority of which is processed by the sawmill sector to produce construction timber to build homes; pallets

to move goods and materials; and fencing for farms and gardens. Small-diameter roundwood is mainly used by Coillte's wood based panel mills and, to a lesser extent, for bioenergy.

Coillte is the country's leading provider of outdoor recreation, offering open public access to circa 6,000 forest properties throughout Ireland, 3,000 km of way-marked trails, 12 forest parks, six mountain-bike trail centres, and 260 designated recreational areas.

Approximately 90,000 ha of the estate (circa 20%) is managed primarily for biodiversity with an ambition to increase this to 30% (an additional 44,000 ha) by the end of 2025. These biodiversity areas are located throughout the estate and contain a wide variety of habitats of high biodiversity value ranging from conifer, mixed and broadleaved forests, to open bogs, heathlands, lakes and rivers. Coillte has developed a science-based approach known as 'BioClass', which classifies the ecological value of the biodiversity areas in the estate. This allows Coillte to develop ecological and silvicultural plans to improve the biodiversity value of these sites. Work to restore habitats and enhance biodiversity is ongoing across the estate through Coillte's BioForest programme.



Coillte Recreation Maintenance Programme – 2022–2026

Spending time in nature, is widely acknowledged as bringing mental and physical benefits to people.

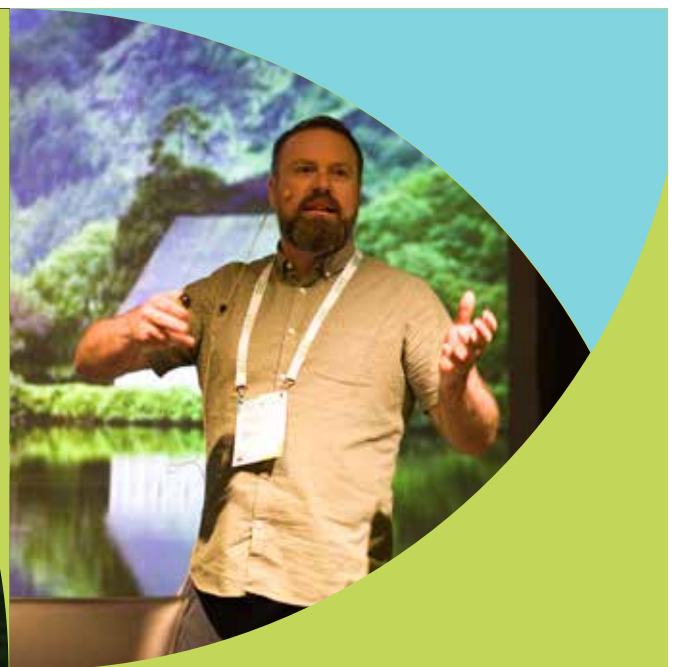
Coillte is proud to provide visitors with extensive and convenient access to outdoor recreational infrastructure. A commitment to responsible open access, coupled with a comprehensive network of forest roads, bespoke waymarked trails, and high-quality forest parks, ensures that the public can enjoy these natural resources to their fullest potential. We are excited to continue delivering these benefits to local communities, fostering a healthier and more vibrant society. The ongoing management and maintenance of forests, parks, trails, picnic areas, and playgrounds attracts a steady stream of visitors, thereby supporting local businesses and social enterprises. As more people turn to active outdoor recreation, Coillte remains committed to ensuring high-quality, enjoyable, and safe access to the outdoors.

In many locations, Coillte provides opportunities for commercial enterprise. These local businesses work hand in hand with Coillte's recreation infrastructure at some of its most popular recreation areas. Examples such as bike hire businesses at Ballyhoura (Limerick), Ticknock (Dublin) and Ballinastoe (Wicklow). Locally run cafés have been established at Ards Forest Park (Donegal), Dún a Rí Forest Park (Cavan), Farren Forest Park (Cork) and various other sites across the country.

Coillte works to ensure positive land management practices through the provision of permits and license agreements for outdoor events, recreation guides and festival organisers. Additionally, its properties serve as venues for numerous social and active lifestyle groups, including Park Run Ireland and Scouting Ireland.

Recognising the significant costs associated with providing recreational services, including capital, management, and maintenance expenses, Coillte has established a strategic partnership with the Department of Rural and Community Development (DRCD). Through a Memorandum of Understanding (MoU), the DRCD has agreed to provide €3 million annually from 2022 to 2026 to enhance recreational facilities on Coillte land. This funding is comprised of €2 million in support of ongoing maintenance costs, while a further €1 million is made available for new recreation facilities and enhancements to our recreational offerings, fostering increased tourism and economic activity in rural areas.

Coillte welcomes the ongoing partnership with DRCD and is proud to play a pivotal role in promoting outdoor recreation and supporting the well-being of the community.



Visitor Trends 2019 to 2024

Managing forests for recreational purposes requires a thorough understanding of visitor habits. By analysing the popularity of specific trails or areas within Coillte's forests, better recreational infrastructure can be developed. To facilitate this, Coillte has installed a network of visitor counters at our most frequented destinations. These counters help us understand visitor patterns, enabling forest managers to allocate resources more effectively. This includes providing adequate parking, maintaining trails, managing litter, and offering other facilities to meet visitor needs. Additionally, it may involve creating designated pathways, installing informative signage, or establishing visitor centres to enhance the overall experience.

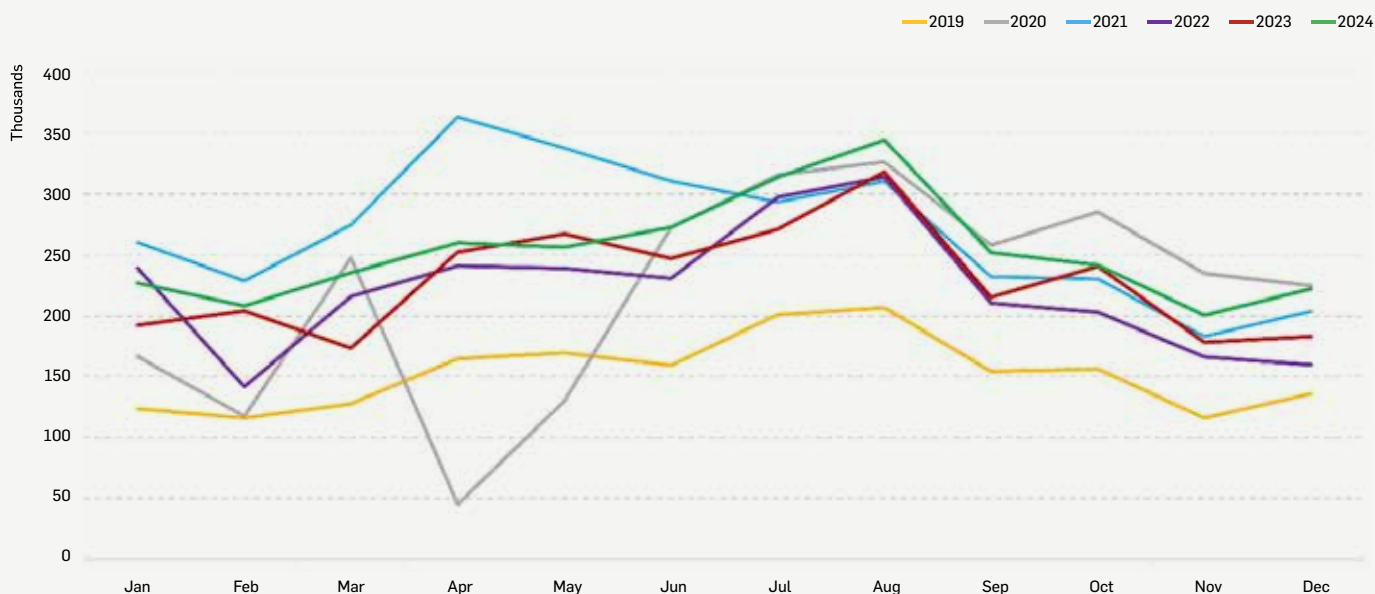
Monitoring visitor numbers also allows Coillte to assess the impact of human activities on the local ecosystem. This information is crucial for identifying areas of concern and implementing measures to minimise negative effects, such

as soil erosion, habitat disturbance, or damage to plant life. Furthermore, visitor counters help confirm the social and economic impact of government investment in recreational infrastructure across Coillte's network.

Visits to Coillte's recreational areas have maintained a consistently high rate in recent years and in 2024, over 3 million visits were recorded using visitor counters at 47 dedicated recreation areas.

In 2024, Coillte recorded over 3 million visits from data collected at 47 dedicated recreation sites.

Visitor Counter Data



The below charts shows the top twenty recorded visitor numbers to Coillte recreation sites in 2024.

Rank 2024	Location	2024 Visitor Count	Change from 2023
1	Avondale Forest Park, Co. Wicklow	344,765*	246.4%
2	Rossmore Forest Park, Co. Monaghan	343,074	-4.1%
3	Ticknock, Co. Dublin	264,441	8.4%
4	Donadea Forest Park, Co. Kildare	216,942	6.6%
5	Tintern, Co. Wexford	169,064	2.7%
6	Hellfire, Co. Dublin	134,583	41.2%
7	Killykeen Forest Park, Co. Cavan	103,000	16.2%
8	Jeninstown Wood, Co. Kilkenny	101,875	13.7%
9	Cong, Co. Galway	87,369	9.7%
10	Ards Forest Park, Co. Donegal	87,116*	92.8%
11	Hazelwood, Co. Sligo	85,795	-0.1%
12	Belleek, Co. Mayo	82,249	-5.3%
13	Mullaghreeelan, Co. Kildare	75,586	-7.2%
14	Curragh Chase Forst Park, Co. Limerick	71,357	-14.7%
15	Millenium Woods, Co. Kilkenny	61,532	1.8%
16	Deerpark Virginia, Co. Cavan	56,999	2.6%
17	Cruagh, Co. Dublin	56,145	23.6%
18	Glenbarrow, Co. Laois	51,685	35.4%
19	Devil's Glen, Co. Wicklow	46,726	1.9%
20	Portumna Forest Park, Co. Galway	45,149	-23.9%

Notes: Visitor numbers calculated using Nomad Counter data, which uses infra-red heat sensors to measure visitors to the forest.
A Magnetometer (vehicle counter) measures cars and assumes 2.5 people per vehicle.

* In 2024, counters at these locations were repositioned within the forest areas to permit more accurate data to be captured on visitor numbers.

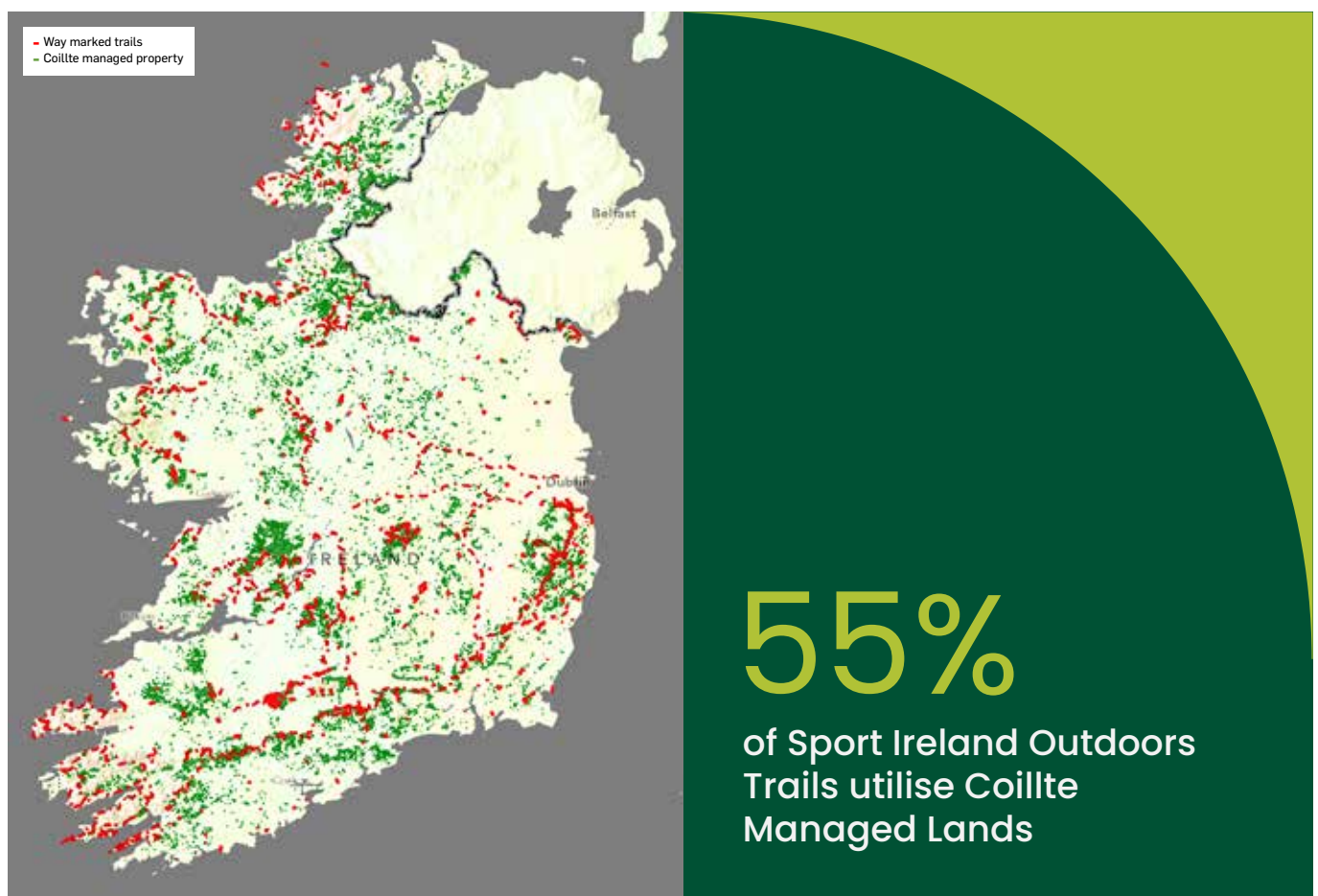
Ireland's Trail Network

For over 35 years, Coillte has been instrumental in developing Ireland's growing Trail Network, collaborating closely with Sport Ireland Outdoors, local authorities, communities, and trail management organisations. Coillte collaborates with these groups to enhance and maintain Ireland's extensive network of recreational trails, benefiting both local communities and visitors. The support provided to these groups is multifaceted, encompassing technical and legislative expertise, design and access insights, networking and partnership opportunities, and guidance on user experience and risk management.

Currently, Sport Ireland Outdoors recognises 1,070 trails, with 584 of them passing through Coillte property. This significant number highlights the importance of Coillte's

role in the trail network. Each trail requires a degree of engagement with local communities and stakeholders to ensure it is maintained to national standards. This engagement includes regular communication with local people, businesses, and other stakeholders to address any concerns and gather feedback. It also involves working with organised volunteer groups who seek out to aid in trail maintenance, promoting community involvement, and fostering a sense of ownership and pride in the local trails.

By working together, Coillte and its partners ensure that Ireland's trail network remains a valuable resource for recreation, tourism, and the well-being of both residents and visitors.



National Waymarked Trails interaction with Coillte Managed Lands

Walks Scheme

The Walks Scheme is a DRCD initiative designed to develop, enhance, and maintain walking trails across the country. It involves collaboration with private landholders, including farmers and rural residents, to ensure trails are well-maintained and accessible to the public. The scheme covers various types of trails such as National Waymarked Ways, Looped Walking Routes, and Heritage Routes that cross their lands. It promotes the development of well-maintained trails and has significantly contributed to rural communities by generating income through maintenance payments to landholders and boosting local economies with increased tourism.

Coillte plays a crucial role in the Walks Scheme. As Coillte manages around 7% of Ireland's land, many Trail Management Organisations (TMO) have integrated Coillte managed forests into waymarked walking trails. Coillte's involvement in the scheme includes:

Providing Access

Coillte permits TMO's access to its forests for the development of walking trails, providing links between other sections of the walks scheme trail.

Trail Maintenance

Coillte collaborates with local councils and organisations to maintain and upgrade trails, ensuring they are safe and accessible.

Community Engagement

Coillte collaborates with communities/TMO's to develop new walks and improve existing ones, fostering local involvement and enhancing the recreational infrastructure.

These TMO partnerships has led to the inclusion of Coillte forest areas in 80 out of 142 Walks Scheme approved trails, making these forests an integral part of DRCD's Walks Scheme.

80

out of 142 Walks
Scheme Trails
incorporate Coillte
forest areas into
their trail networks



Gougane Barra - Part of Walks Scheme Route The Beara Way

Funding Evaluation

Through the agreement with the Department of Rural and Community Development, Coillte recorded over €4.2 Million of expenditure for the ongoing maintenance, enhancement and development of recreational infrastructure throughout Ireland in 2024. This was supported by the Department with a funding provision of €2.76 million that was afforded to Coillte.

This funding was used to manage and maintain 175 of Coillte's existing and extensive recreational offerings for the people

of Ireland and enabled Coillte to continue to collaborate with local communities, authorities and stakeholders with the long term goal of establishing and enhancing recreation infrastructure in partnership.

In 2024, Coillte delivered on several key capital projects throughout the country, to the value of €998,956.

Some notable examples include;

Kilrush, Co. Clare	Trail upgrades at popular recreation area
Slievethoul, Co. Dublin	Solar powered access barrier and new connecting walking trail
Castlegrove, Co. Galway	Trial development works to provide up to 2km of walking trails
Dromore, Co. Kerry	New recreation trail
Glanteenassig, Co. Kerry	Road resurfacing works
Donadea Forest Park, Co. Kildare	Phase 1 of new trail and protection of boundary walls
Curragh Chase Forest Park, Co. Limerick	Enhancement of the Yew Tree Trail
Belleek Wood, Co. Mayo	Preparation works as part of the Belleek Wood Pond rejuvenation project
Rossmore Forest Park, Co. Monaghan	Installation of new toilets and associated works in Rossmore Forest Park
Glengarra, Co. Tipperary	New Footbridge for walking trail users

Costs Type	Total Project Cost	DRCD Funding Received in 2024
Maintenance	€3,243,826	€1,966,403
Capital	€988,956	€799,165

DRCD-Coillte 2024 Programme Project Case Studies

Below are several examples of 2024 capital and maintenance projects completed with the support of DRCD funding.



ALL ACCESS TOILETS **ROSSMORE FOREST PARK, CO. MONAGHAN**



This busy forest park received the installation of two wheelchair accessible toilet units, located close to the playground.

TRAIL DEVELOPMENT WORKS

DONADEA FOREST PARK, CO. KILDARE

Donadea Perimeter Trail

Phase 1 of the installation of a perimeter trail around Donadea forest park along an informal path that is popular with many visitors. The request from visitors was to have a longer trail option in the park. The trail will follow the boundary wall as much as possible.

BEFORE



AFTER



TRAIL DEVELOPMENT WORKS

KILRUSH FOREST RECREATION AREA, CO. CLARE



Kilrush Forest saw upgrades to the forest trail network in 2024, improving access to this popular forest area.

TRAIL DEVELOPMENT WORKS WOODSTOCK, CO. KILKENNY

In late winter 2023, the riverside walk in Woodstock recreation area, Inistioge, Co. Kilkenny suffered severe damage following a high rainfall event. The river Nore washed away large segments of the river bank, taking with it sections of the Nore Valley Walk. In early 2024, Coillte worked with local stakeholders to repair this popular walking route. This involved specialists hand weaving willow rods into the bank, which will grow roots and support the riverbank from further erosion.

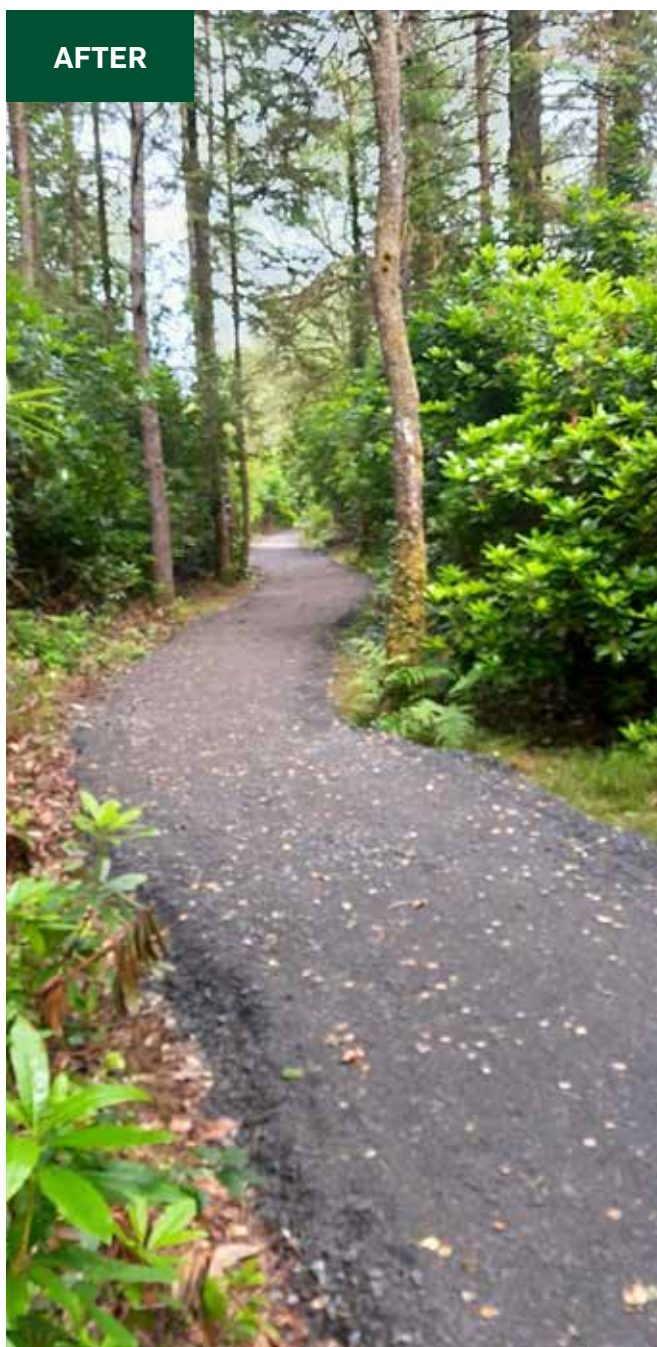


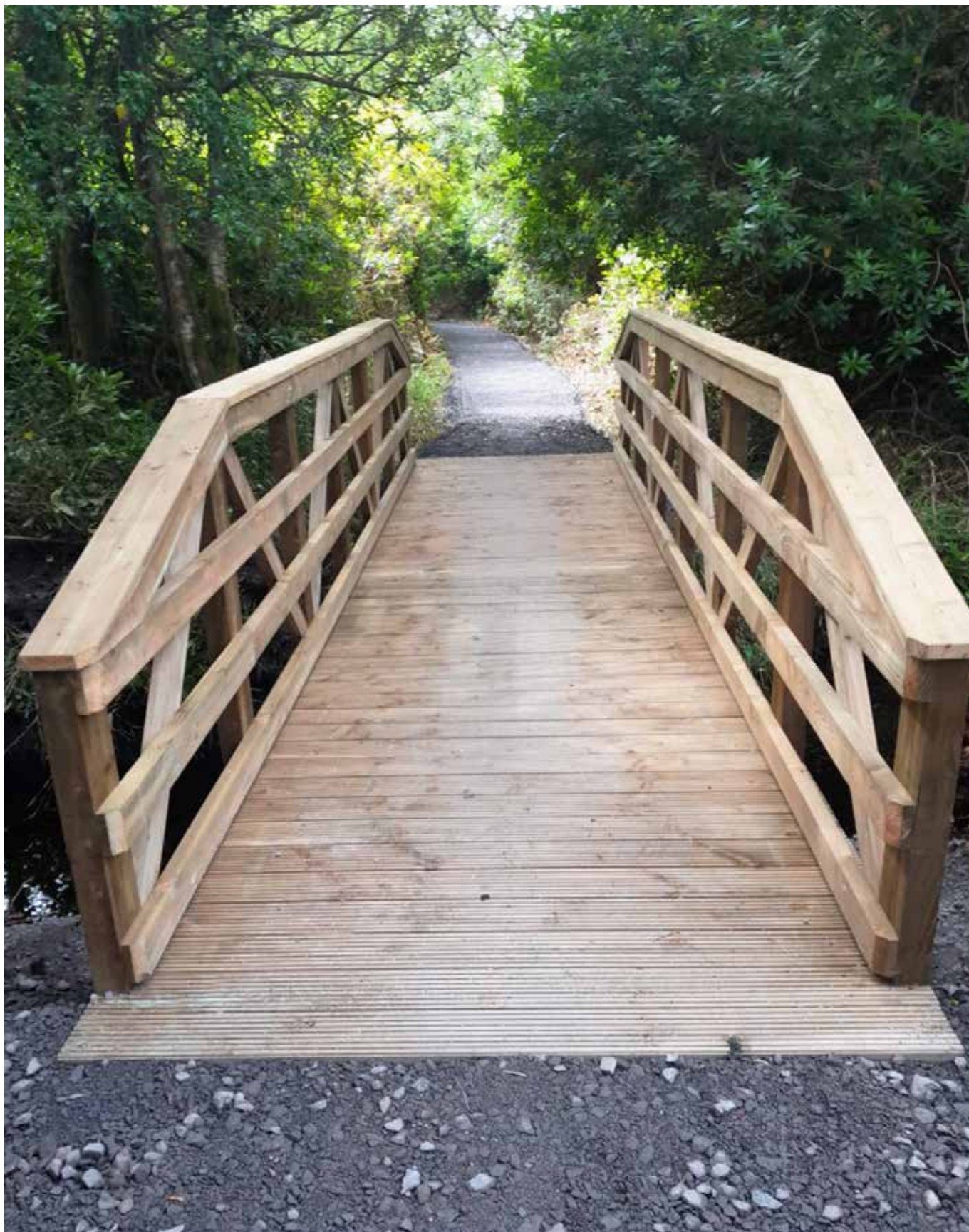
River Damage - Woodstock



LOUGH KEY FOREST PARK GARDEN WALK RENEWAL CO. ROSCOMMON

This well-loved 4km moderate-grade trail underwent essential maintenance and enhancement work in 2024. This included the replacement of a bridge, ensuring the trail remains safe and accessible for all users. The new bridge not only enhances the trail's functionality but will also add to the overall aesthetic appeal, blending seamlessly in time with the natural surroundings.

BEFORE**AFTER**



Lough Key Forest Park Garden Walk following improvement works.

TRAIL DEVELOPMENT WORKS

TINTERN ABBEY, CO. WEXFORD

A popular section of the trails in Tintern was inaccessible to families with buggies due to a single file bridge and a steep section with sleeper steps. The solution was to replace the bridge with a wider one (the old one will be re-used on another site), remove the steps and dig out a section to reduce the incline thus allowing buggy access.



New Footbridge



Walkers Shelter



Trail Upgrade.

GLENBARROW PATH IMPROVEMENT WORKS CO. LAOIS

Glenbarrow is one of the most scenic parts of the Slieve Bloom Mountains area, which offers visitors close access to waterfalls through a steep-sided valley. The area is quite remote but has become one of the most popular visitor sites in the mountains. The bog bridge had grown tired from heavy visitor numbers and persistent damp in the area, so improvement works were implemented in 2024 which saw the replacement of the bog bridge with hard core material.





OTHER MAINTENANCE IMPROVEMENT WORKS

AVONDALE POND WORKS, CO. WICKLOW

Restoration of an old trail around the duck pond that was built to supply water to run the mill wheel of the first sawmill in Avondale.

Works included installation of two new bridges, one to cross an old ford that regularly flooded and the other to cross the water works that controlled the flow of water to the mill.



OTHER MAINTENANCE IMPROVEMENT WORKS MULLAGHREELAN TRAIL, CO. KILDARE

A new trail to interconnect with the other trails was established along a desire line that visitors were already using.



Community Recreation and Project Development Support

Each year, in addition to delivering the DRCD-Coillte agreed programme of works, Coillte collaborates with local community groups and volunteers, local authorities, national governing bodies, Sport Ireland, and other agencies to achieve collective goals. Through these partnerships, new amenities are enabled, as well as the maintenance of existing infrastructure, to ensure recreational opportunities are available and accessible to all.

In recognition that resources are needed to support ongoing local engagement and project development, a proportion of the maintenance funding is used to meet Community recreation and project development support costs.

This funding facilitates the necessary resources for ongoing community and local engagement and provides support for the delivery of funded recreation projects (other than DRCD-Coillte agreed programmed works) that benefit local communities.

The fund contributed to the facilitation of Outdoor Recreation Infrastructure Scheme (ORIS), Town and Village Renewal Scheme, LEADER and other DRCD funded schemes, led by local authorities and others, to be developed on Coillte lands. In 2024, of the €20.2m announced under ORIS, over €4.5m was approved for projects enabled through collaboration with Coillte. Each of the ORIS projects requires liaison and agreement with 3rd parties, licence agreements, ecology and environmental assessment and reporting, works specification and in most cases, contract works management by Coillte.

As an additional benefit, the fund has aided in delivering continuous engagement and support to external recreation stakeholders including technical and legislative expertise, design insights and specifications, access considerations, networking and linking of trails and recreation sites, guidance on user expectations and visitor risk management.

Below are examples of projects enabled through this support fund.



KILMAGIG FOREST, CO. WICKLOW NATURAL WOODLAND PLAY AREA

Coillte is proud to have played a significant role in the development of the new Natura Woodland Play Area at the Red Kite Loop in Kilmagig. This project is an excellent example of how Coillte's community recreation development and support has led to positive initiatives and enhancements for rural communities.

From the outset, Coillte worked closely with Avoca community members and representatives from various organisations to secure the necessary permissions and funding under the ORIS. Coillte support was instrumental in bringing this vision to life, ensuring that the play area would provide a valuable resource for families, local schools, and visitors.

The play area, fitted with play furniture and sensory equipment sponsored by SSE Renewables, offers a unique forest experience, scenic walk, and an inclusive place to play. It is a wonderful addition to the popular Red Kite Loop, enhancing the natural beauty of the area while providing educational and recreational opportunities for all.



Kilmagig Forest ORIS Project



Kilmagig Forest ORIS Project

ISLAND WOOD ORIS PROJECT CO. CORK

The Island Wood riverwalk project has been led by a local community group who secured funding through Cork Local Authority under ORIS 2023 to upgrade 200m of the existing worn path. Coillte has facilitated the works through co-operation with Cork County Council and has engaged extensively with the local community over the past number of years about this project. This existing riverwalk has suffered years of flood damage and this project aims to address the long-standing path erosion issues that have been noted at this location by members of the community. To ensure the works are suitable for this sensitive environment, detailed discussions and approval was received from both Inland Fisheries Ireland and the National Parks and Wildlife Service.

The project has selected the use of concrete as the path surface along the riverside walk in the Island Wood recreation area for the creation of a long-term durable surface suitable for a wide variety of users. The community is currently working with Coillte and Cork Local Authority to secure further funding to complete the next phase of works.

BEFORE**AFTER**

DARTREY ORIS PROJECT CO. MONAGHAN



Enhancement works included informal play spaces, interpretation and seating, and improved accessibility measures.

MILLENNIUM WOOD ORIS PROJECT CO. KILKENNY

Kilkenny County Council in partnership with Coillte upgraded both sites to include multi access trails to accommodate wheelchair users, upgrade also included re-surfacing of car park in the Millennium and a compostable toilet unit. Both sites also got upgraded picnic areas.

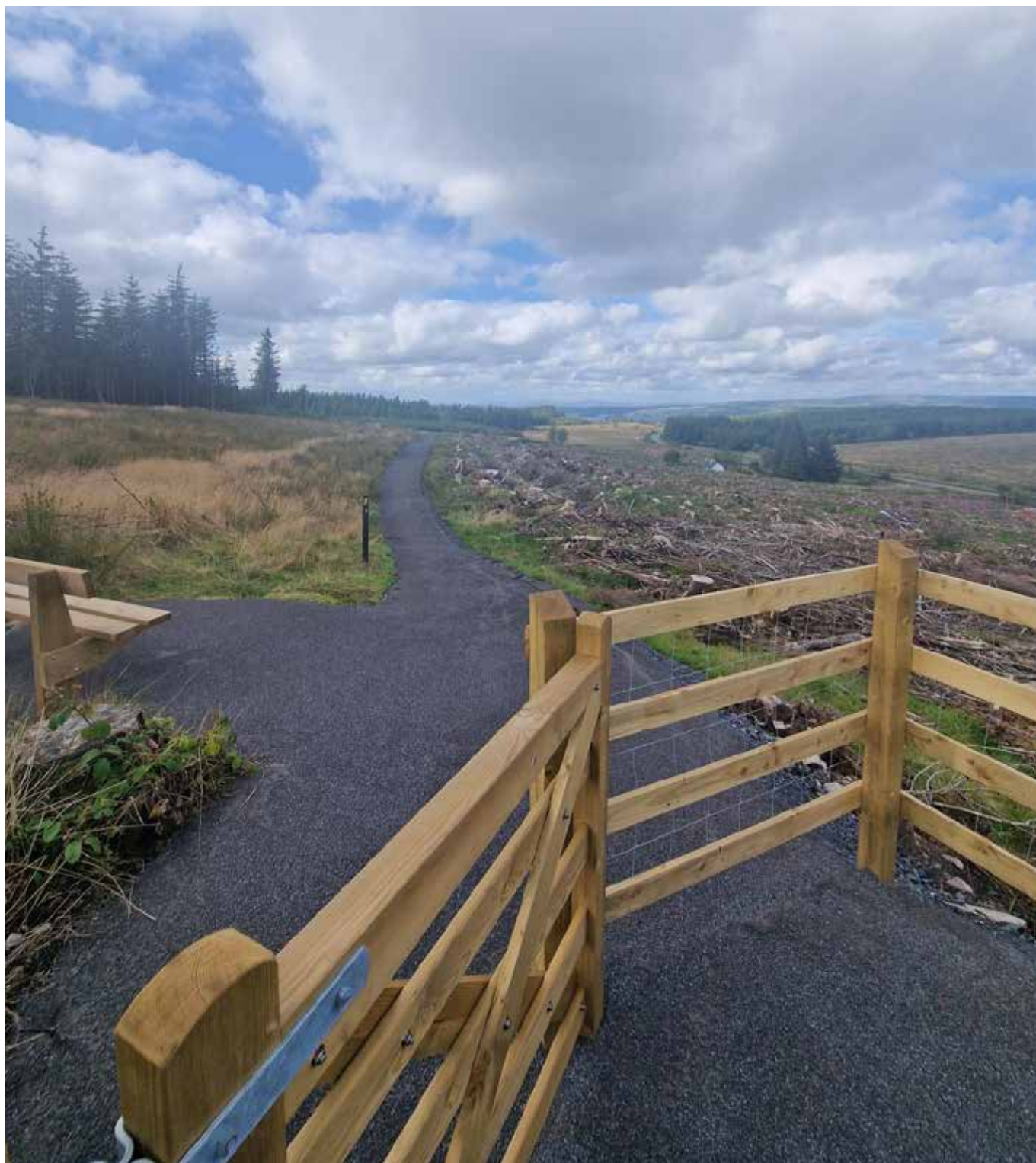


JENKINSTOWN ORIS PROJECT CO. KILKENNY



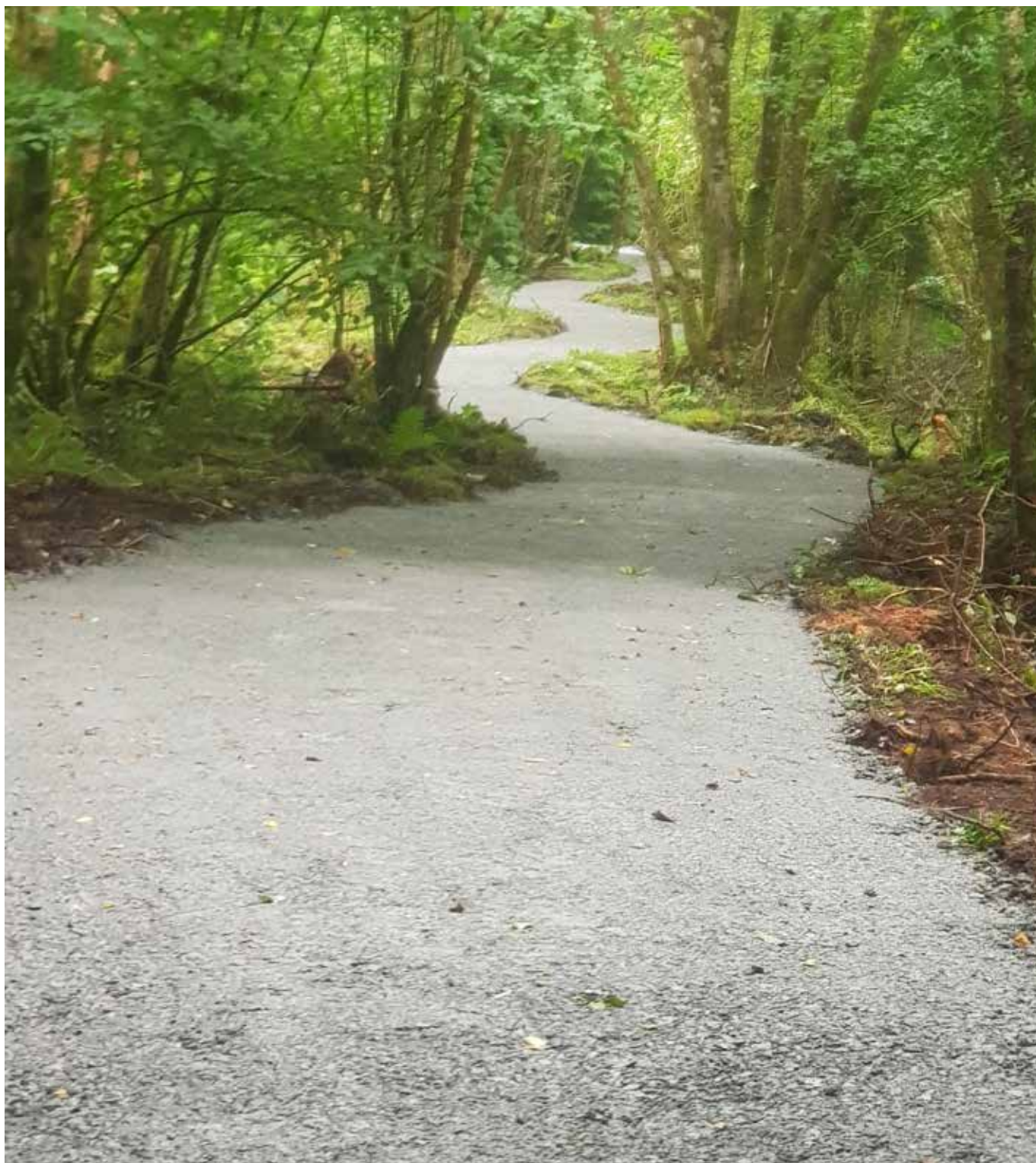
Upgrade of 400m of trails at Jenkinstown.

RED EARLS PASS ORIS PROJECT CO. SLIGO



Trail surface and water management improvements works at the Red Earls Pass, part of the Miners Way.

BALLYGALLWAY TRAIL ORIS PROJECT CO. SLIGO



Rehabilitation of approximately 1.8km of the upland Sligo Way long-distance walking trail.

Appendix



Appendix 1 – Sites maintained with DRCD funding contribution in 2024

County	Site/Trail Name	Nearest Town	Description of Works
Cavan	Bailieboro	Bailieboro	General maintenance
Cavan	Burren	Blacklion	General maintenance
Cavan	Castle Saunderson	Belturbet	General maintenance
Cavan	Deerpark	Virginia	General maintenance of tracks and trails
Cavan	Dun an Ri Forest Park	Kingscourt	Trail repairs, tree surgery and upkeep of recreation area
Cavan	Killykeen Forest Park	Killykeen	General trail maintenance and removal of dangerous ash trees along trails.
Clare	Ballycuggaran	Killaloe	Maintenance works associated with growing recreation area
Clare	Cratloe	Limerick	Safe removal of dangerous trees
Clare	East Clare Way	Various	General maintenance, path repair, windblown trees
Clare	Woodpark	Mountshannon	Safe removal of dangerous trees
Cork	Ballyannan	Midleton	General maintenance and minor trail repair
Cork	Carrigfadda	Rosscarbery	General maintenance
Cork	Castleblagh	Ballyhooley	General maintenance
Cork	Castlefreck	Rathbarry	General maintenance, hedge cutting
Cork	Castlemartyr	Castlemartyr	General maintenance
Cork	Corrin	Fermoy	General maintenance
Cork	Curragh	Midleton	General maintenance
Cork	Curraghbinny	Carrigaline	General maintenance, tree surgery and hedge cutting
Cork	Farran Forest Park	Coachford	General maintenance - toilet block, playground, picnic area and trails. Grass cutting and tree surgery
Cork	Garrettstown	Garrettstown	General maintenance, hedge cutting and signage
Cork	Glanduff/ Kilbrittain	Kilbrittain	General maintenance, hedge cutting
Cork	Glansheskin	Kilworth	General maintenance
Cork	Glenabo	Coolmucky	General maintenance and hedge cutting
Cork	Glenanair	Ardpatrick	General maintenance, windblow
Cork	Glenbower/ Killeagh	Killeagh	General maintenance
Cork	Guagán Barra Forest Park	Ballingeary	General maintenance, trail repair
Cork	Island Wood	Newmarket	General maintenance
Cork	Leamlara	Leamlara	Footbridge improvement works
Cork	Marlogue	Cobh	General maintenance
Cork	Moanbaun/ Main Block	Watergrasshill	General maintenance
Cork	Mount Hillary	Banteer	General maintenance
Cork	Mullinhassig Waterfall	Macroom	General amenity maintenance
Cork	Oldcourt	Rochestown, Cork city	General maintenance
Cork	Pooleen	Glengarriff	General maintenance to car park and trails
Cork	Rineen	Union Hall	General maintenance

Appendix 1 – Sites maintained with DRCD funding contribution in 2024

County	Site/Trail Name	Nearest Town	Description of Works
Cork	Rostellan	Aghada	General maintenance
Cork	Warrencourt	Macroom	General maintenance and hedge cutting
Donegal	Ards Forest Park	Dunfanaghy	General maintenance, grass cutting
Donegal	Bonny Glen/Clooney Wood	Portnoo	Trail repairs, general maintenance
Donegal	Drumboe	Stranorlar	Path maintenance, replacement of timber railings. Cut back vegetation/ branches on path edges
Donegal	Lough Eske	Donegal	Path maintenance, remove rhododendron from paths
Donegal	Murvagh	Donegal	Trail repairs and tree surgery works
Donegal	Rossylongan	Donegal	Handrail installation, path surfacing and tree surgery works
Dublin	Barnaslingan Car Park	Enniskerry	General maintenance
Dublin	Dublin Mountains Way	Various	General maintenance
Dublin	Hellfire car park and trails	Dublin	General maintenance
Dublin	Ticknock	Dublin	Fairy Castle loop repairs and bridge stream
Galway	Aghrane	Ballygar	General maintenance, path repair, windblown trees
Galway	Cong	Cong	General maintenance, dangerous trees, blowing leaves etc.
Galway	Derroua MTB Trails	Maam Cross	General maintenance
Galway	Derrygill	Woodford	General maintenance, path repair, windblown trees. Maintain trails near operations
Galway	Inchagoill	Cong	General maintenance, dangerous trees, blowing leaves etc.
Galway	Monivea	Monivea	Signage, repair paths, tree surgery
Galway	Mountbellew	Mountbellew	Signage, cut back vegetation, repair paths, tree surgery
Galway	Portumna Forest Park	Portumna	General maintenance, path repair, windblown trees. Car Park maintenance and Built heritage improvement works
Galway	Rosturra	Woodford	General maintenance, path repair, windblown trees
Kerry	Ballygamboon	Tralee	General maintenance, strimming, check picnic furniture.
Kerry	Caragh Lake	Killorglin	Ongoing maintenance of the recreation area
Kerry	Carragh Lake	Carragh Bridge	General maintenance
Kerry	Dromore	Kenmare	General maintenance, trail upgrade
Kerry	Glannageenty	Castleisland	General maintenance. Wind blown trees from trail
Kerry	Glanteenassig	Castlegregory	General maintenance. Board walk maintenance (post and rails), forest road repairs
Kerry	Gleensk	Kells Bay	Monitoring, strimming, maintain steps
Kerry	Glenbeigh	Glenbeigh	General maintenance
Kerry	Kerry Way	Various	Safe removal of windblow on walking trail
Kerry	Kilderry	Miltown	General maintenance
Kerry	Killaclohane	Castlemaine	General maintenance, hedge cutting
Kerry	Kimego	Caherciveen	General maintenance on trails and car park. Signage
Kerry	Lickeen	Glencar	General maintenance, water damage
Kerry	Lyracrumpane	Listowel	General maintenance, trail repair

Appendix 1 – Sites maintained with DRCD funding contribution in 2024

County	Site/Trail Name	Nearest Town	Description of Works
Kerry	Pike Wood	Killarney	General maintenance, remove windblow trees, benches, grass cutting
Kerry	Rossacroo	Kilgarvan	General maintenance of trail, bridge maintenance (wire for grip)
Kildare	Donadea Forest Park	Prosperous	Forest park general maintenance
Kildare	Killinthomas	Rathangan	General maintenance
Kildare	Moore Abbey	Monasterevin	General site maintenance
Kildare	Mullaghreelan	Castledermot	Upgrade walking trails
Kildare	Rahin	Edenderry	Upgrade recreation infrastructure and maintenance
Kilkenny	Jeninstown & Ballyrafton	Kilkenny	Toilet maintenance, cut grass, maintain walkways, upgrade of 400m of trails not included in KKCC ORIS project
Kilkenny	Woodstock	Kilkenny	Repair section of river walk eroded by storms
Laois	Cullahill	Durrow	General maintenance
Laois	Emo Court	Emo	General maintenance of tracks and trails
Laois	Glenbarrow	Rosenallis	Replace handrails sections, trail repair of badly eroded section and maintenance
Leitrim	Derrycarne	Carrick-on-Shannon	General maintenance of trails
Leitrim	Glenfarne	Glenfarne	General amenity maintenance
Leitrim	Milltown/Ballyglass	Manorhamilton	Strimming, path repairs
Leitrim	Scardan waterfall	Drumkeeran	General amenity maintenance
Leitrim	The Leitrim Way	Various	General amenity maintenance
Limerick	Ballyhoura (incl MTB)	Ardpatrick	General maintenance. Replace/supplement signage
Limerick	Curragh Chase Forest Park	Kildimo	General maintenance - toilet block, playground, picnic area and trails. Grass cutting and tree surgery
Limerick	Foynes	Foynes	General maintenance, car park, trail maintenance
Limerick	Galty Castle	Kilbehenny	General maintenance, tree surgery
Limerick	Liskennett	Croom	General maintenance
Longford	Derrycassan	Granard	Trail upgrade, tree maintenance
Longford	Gowna/Mulrick	Gowna	General maintenance repairing trails
Longford	Rathcline	Lanesboro	General maintenance repairing trails
Louth	Carlingford/Sliabh Foye	Carlingford	General maintenance of trails and picnic areas
Louth	Ravensdale	Ravensdale	New signage and trail repair
Louth	Townley Hall	Tullyallen	General maintenance, fence repair, trail upkeep
Mayo	Belleek wood	Ballina	General maintenance, dangerous trees, blowing leaves etc.
Mayo	Brackloon wood	Westport	General maintenance
Mayo	Breaffy	Castlebar	No parking signage and directional signage
Mayo	Castlemagarrett	Claremorris	Rhododendron control, general maintenance
Mayo	Drummin	Foxford	Strimming of paths, general maintenance

Appendix 1 – Sites maintained with DRCD funding contribution in 2024

County	Site/Trail Name	Nearest Town	Description of Works
Mayo	Knockranny	Westport	General maintenance
Mayo	Moore Hall/Towerhill	Ballinrobe	General maintenance
Mayo	Raheens	Castlebar	Resurfacing paths
Mayo	Sheskin	Ballycastle	General maintenance
Mayo	Tourmakeady	Tourmakeady	Rhododendron control and path upgrade works
Meath	Girley Bog	Kells	General maintenance. Repair/resurface roadway
Meath	Littlewood	Slane	General maintenance. Maintain trails
Meath	Summerhill	Summerhill	General upkeep of car park and picnic areas
Monaghan	Black Island	Castleblaney	General maintenance and tree surgery along trails
Monaghan	Dartry	Cootehill	General maintenance
Monaghan	Derrygorry Millenium Woodlands	Emyvale	General maintenance
Monaghan	Rossmore Forest Park	Monaghan	General maintenance programme and remove dangerous trees along trails
Offaly	Slieve Bloom MTB Trail	Kinnitty	General maintenance
Offaly	Slieve Bloom Way	Kinnitty	Upgrade of 200m badly eroded section of Slieve Bloom Way as highlighted by Trails Committee
Roscommon	Clonfad	Clonfad Village	General maintenance
Roscommon	Correen	Ballinasloe	Grass cutting, tree surgery, general maintenance
Roscommon	Derryvunny	Carrigeenroe	Grass cutting, tree surgery, general maintenance
Roscommon	Dunamon	Castlecoote	Grass cutting, tree surgery, general maintenance
Roscommon	Knockranny	Keadue	Grass cutting, tree surgery, general maintenance
Roscommon	Lough Key Forest Park	Boyle	Internal trail improvements, hedge cutting, tree surgery.
Roscommon	Miners way/Historical trail	Arigna	General maintenance and tree surgery
Roscommon	Mote Park	Roscommon	General maintenance and tree surgery. Roadside verge trimming. Repair of existing main walking trails, new seating
Roscommon	Oakport	Boyle	General repairs in the area Bracklin to Dunamon
Roscommon	Slieve Bawn Wind Farm	Strokestown	General repairs
Sligo	Cartron (Troll wood)	Dromahair	Clearing trees and rockslides
Sligo	Coolaney MTB	Coolaney	General maintenance
Sligo	Deerpark Sligo	Sligo	Path and road repairs
Sligo	Hazelwood	Sligo	Path repairs, windblown trees
Sligo	Lissadell	Sligo	Grass strimming
Sligo	Rathcarrick	Strandhill	Path repairs, step repairs, windblown trees
Sligo	Slishwood	Sligo	Path and road repairs and grass strimming
Sligo	Union wood	Collooney	Grass strimming and road repair, step repair
Tipperary	Bansha Woods	Bansha	General maintenance to trails and carpark
Tipperary	Cahir Park	Cahir	General maintenance

Appendix 1 – Sites maintained with DRCD funding contribution in 2024

County	Site/Trail Name	Nearest Town	Description of Works
Tipperary	Glengarra	Mitchelstown	General maintenance
Tipperary	Grangecrag	Grange/Gortnahoo	General maintenance
Tipperary	Killballyboy	Cappamore	General maintenance
Tipperary	Kilshane	Kilshane	General maintenance
Waterford	Carey's Castle	Clonmel	General maintenance and trail upgrade
Waterford	Colligan	Dungarvan	General maintenance, check hedge cutting, strimming
Waterford	Dromana	Villierstown	General maintenance
Waterford	East Munster Way	Various	Minor trail repairs
Waterford	Glenshelane	Cappoquin	General maintenance
Waterford	Kilclooney	Rathcormack	General maintenance
Waterford	Marlfield	Clonmel	General maintenance, trail repair
Waterford	Mocollop	Waterford	General maintenance and monitoring anti-social behaviour
Waterford	St. Declan's Way	Various	General maintenance, route improvements
Westmeath	Ballinafid	Mullingar	Maintenance works and trail repair
Westmeath	Ballingall	Mullingar	General trail and track maintenance
Westmeath	Carn Park	Athlone	General maintenance of site
Westmeath	Kilpatrick	Mullingar	Maintenance works and trail repair
Westmeath	Moydrum	Athlone	Trail maintenance and treatment of furniture and railings.
Westmeath	Mullaghmeen	Oldcastle	Roads/trails upgrade. Resurface trails
Westmeath	Westmeath Way	Various	General maintenance of site
Wexford	Ballyfad	Gorey	Repair paths, cut hedges
Wexford	Blackwater	Blackwater	Scrape walking trail and cover with hardcore
Wexford	Carrickbyrne	New Ross	Upgrade all of the walking trails and install seating
Wexford	Ramsfort Park	Gorey	Upgrade walking trails and remove blown trees on walkway
Wexford	Tintern	New Ross	Upgrade walking trails
Wicklow	Avondale Forest Park	Rathdrum	Trail upgrades Railway and River walks and tree surgery
Wicklow	Avonmore Way/ Trooperstown	Rathdrum	General site maintenance
Wicklow	Ballygannon	Rathdrum	Vegetation control and tree surgery
Wicklow	Devils Glen	Ashford	River walk maintenance
Wicklow	Djouce (Deerpark)	Roundwood	Picnic area improvement works
Wicklow	Glenart	Arklow	Trail Upgrade and repair

For more information about Coillte,
please contact us at:

Coillte,
Dublin Road,
Newtownmountkennedy,
Co. Wicklow,
A63 DN25.

Tel: 1890 367 378
Email: info@coillte.ie
www.coillte.ie



An Roinn Forbartha
Tuaithe agus Pobail
Department of Rural and
Community Development