



## LORRY LOADER CRANE JACKS STOWING

### Background

A timber haulage lorry driver recently suffered a severe hand injury after delivering a load of timber. The injury occurred as the driver retracted the crane jacks to the transport position.

### What Happened

- On completion of the delivery, the driver stowed the crane and dismounted from it
- He climbed completely off the lorry and when on the ground, proceeded to retract and stow the crane jacks
- During the retraction of the jacks, the operator got his hand caught in the workings
- This resulted in the subsequent surgical amputation of two fingers

### Findings

- For the model of lorry loader crane involved, the jack controls are at the base of the crane
- The driver inadvertently operated the controls from the ground, stretching up to them, as opposed to correctly operating them from on the crane base, consequently leaving himself in a more vulnerable location
- While operating the controls from an unsuitable location, the driver unwittingly rested his free hand on a plate that the retracting jack came into contact with

*Photos of working arrangement overleaf*

### Corrective Action

- Hauliers / owners of lorry loader cranes must ensure that:
  - all their drivers and sub-contractor drivers are made fully aware of the contents of this safety alert
  - they have risk assessments and suitable controls / procedures in place for **all** tasks, including those associated with the safe operation of cranes and stabilising jacks
  - staff are fully trained and clearly understand the risks and controls / procedures when operating cranes and jacks
- Hauliers / owners of lorry loader cranes must, from time to time, monitor staff operating equipment so as to ensure inappropriate procedures have not been adopted or evolved

### Learning Points

- Complacency leads to accidents regardless of how experienced operators may be. Vigilance to the dangers associated is of vital importance to minimise the risks involved.
- Staff may inadvertently adopt hazardous practices without recognising the risks involved
- When purchasing replacement equipment, consideration must be given to operator safety. Lorry loader cranes with controls remote from stabilising jacks will be safer than ones where controls can be used when potentially in harm's way.

Please Don't Walk By



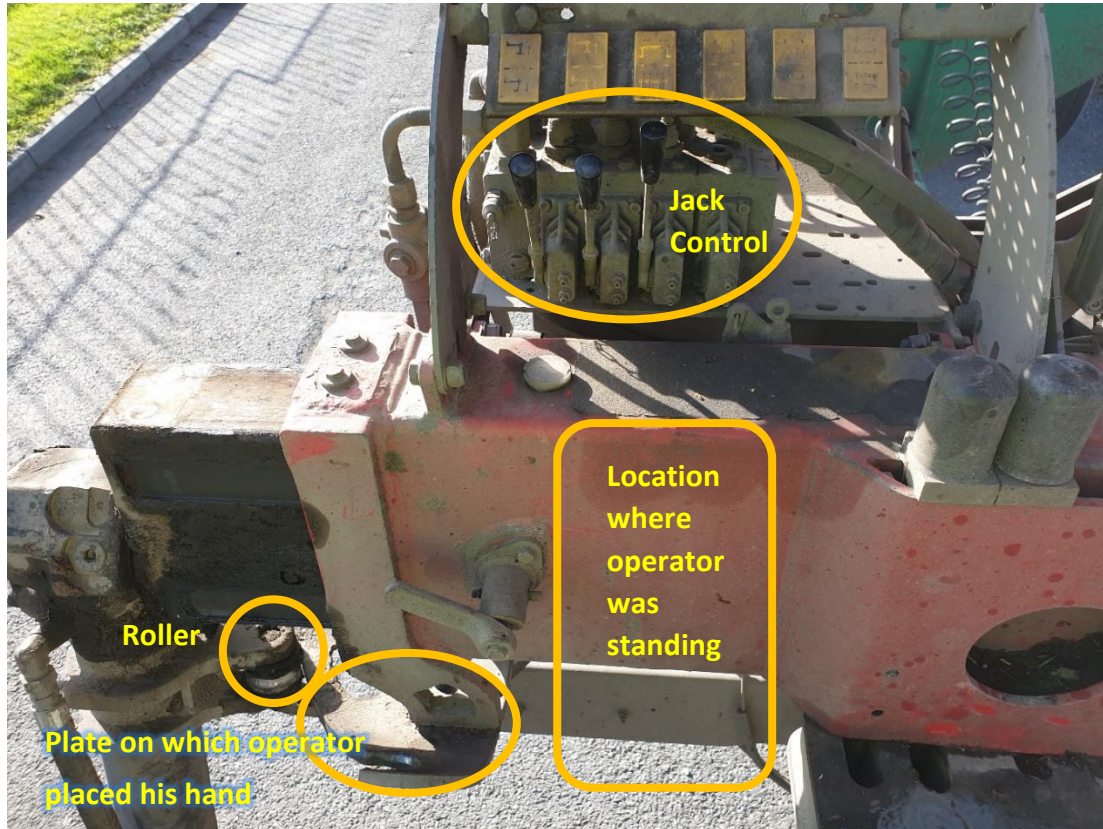
**Ensure this Safety Alert is brought to the attention of all employees and sub-contractors.**

# Safety Alert

Number 38

10<sup>th</sup> February 2021

## LORRY LOADER CRANE JACKS STOWING



*When fully retracted, the roller sits into a hook to securely lock the jacks for travel. Hydraulic force from the retracting extendible jack arm powers the roller into position.*

*Based on information gathered during the accident investigation the drivers hand was on the plate when the jack returned to the transport position causing the severe crushing injury to his fingers.*

