

**COILLTE UNDERPINS SECURITY OF ENERGY SUPPLY FOR INDUSTRIAL BOILER PLANT**

Coillte are supplying Botany Weaving’s industrial boiler on long term contract for several years now delivering continuous energy savings and carbon reductions for our client. Established in 1934, today, our client is market leader of aviation and ground transportation interior textile manufacture and employs over 100 people at its facilities in Dublin and Donegal. They are approved by Boeing Airbus and the Irish Aviation Authority and Boeing recently awarded them with their Gold Approval for quality and on-time delivery.



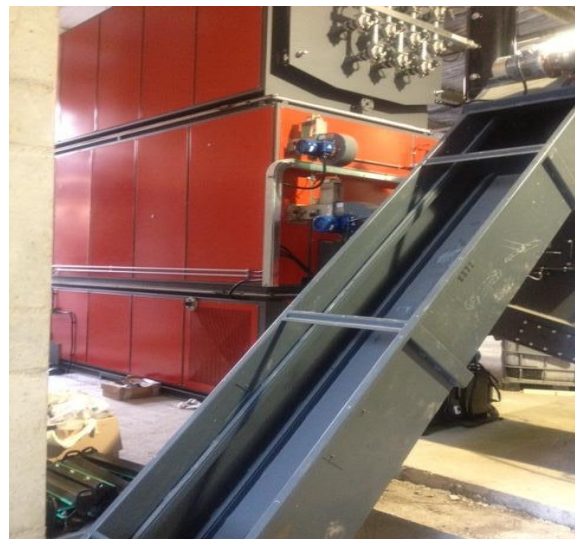
Operating in a competitive environment and with a growing concern about rising fossil fuel costs and fuel price volatility, management began to investigate alternatives for their production facility located in Kilcar, Co. Donegal which was heavily reliant on oil as the main energy source..

Having secured a long term supply agreement from Coillte to underpin the investment a UNICONFORT GLOBAL/G-120 four fire cycle steel boiler with a heat output of 1.4MW was installed in 2013. The plant produces steam at an operating pressure of 6 bar and is fitted with a base designed for the installation

of a grate mechanical auger burner. Biomass fuel is fed from the fuel store by a hydraulic pusher device into a trough that feeds up to the boiler in-feed.



The feed system incorporates a cutting system for reducing oversize particles, min-max sensors for activating the feed and a fire protection system.



The wood chip fuel delivery reception and storage area is located in an above ground fuel store with moving floor hydraulic pusher device to feed fuel into the trough through a slot in the end wall. Due to restrictive access at the site, biomass is delivered to

the site and tipped into an on-site custom mobile conveyor system designed by Coillte which delivers fuel across into the fuel store.



Biomass is supplied on long term contract to the boiler manufacturer's specification and checked for compliance in moisture content, particle size and percentage fines to I.S. CEN/TS 14961 : 2005. As a direct result of the new installation, Botany Weaving are now displacing several thousand litres of oil per week and have reduced their energy costs significantly. Payback for the entire project is attractive thereby maintaining competitiveness and securing local jobs for the plant into the future.

#### **SECURITY OF SUPPLY FROM COILLTE**

Biomass feed stocks are sourced from Coillte's own forest resources and private sources in the North West region. Coillte is committed to a biomass strategy that matches renewable energy requirements with local biomass supply.

Coillte supplies the Botany Weaving plant from its North West supply hub in Drumkeen, Co. Donegal. This hub is one of the largest biomass processing

hubs in the country servicing clients in the North West and Northern Ireland. Infrastructure includes 10 acres of outside log storage and 2500m<sup>2</sup> of covered wood chip storage sheds. In addition there is a weighbridge and quality testing laboratory.



Delivery vehicles comprise of moving floor trailers, tipping trailers and blower units. The depot has a modern Starchl Drummond chipper capable of processing 20T per hour. Typically this fuel hub stores 15,000m<sup>3</sup> + of pulpwood logs on a daily basis.

Coillte is playing a key leadership role in delivering sustainable biomass energy solutions to Irish industry in the North West. Coillte provides long term, secure biomass fuel supply contracts to its clients and can assist in the evaluation of the both technical and commercial viability of projects for large scale energy users. Sustainable biomass solutions are our business.

**Des O'Toole**

Commercial Business Development Manager

[E Des.OToole@coillte.ie](mailto:Des.OToole@coillte.ie)

**T** +353 1 201 1111 **M** +353 86 2301234